

Daily Epidemiologic Summary

COVID-19 in Ontario: January 15, 2020 to January 13, 2021

This report includes the most current information available from CCM and other case management systems (CCM plus) as of **January 13, 2021**.

Please visit the interactive [Ontario COVID-19 Data Tool](#) to explore recent COVID-19 data by public health unit, age group, sex, and trends over time.

A [weekly summary report](#) is available with additional information to complement the daily report.

This **daily** report provides an epidemiologic summary of recent COVID-19 activity in Ontario. The change in cases is determined by taking the cumulative difference between the current day and the previous day.

Highlights

- There are a total of 228,310 confirmed cases of COVID-19 in Ontario reported to date.
- Compared to the previous day, this represents:
 - An increase of 3,326 confirmed cases (percent change of +12.3%)
 - An increase of 62 deaths (percent change of -16.2%)
 - An increase of 3,593 resolved cases (percent change of +5.9%)

In this document, the term 'change in cases' refers to cases publicly reported by the province for a given day. Data corrections or updates can result in case records being removed and or updated from past reports and may result in subset totals for updated case counts (i.e., age group, gender) differing from the overall updated case counts.

The term public health unit reported date in this document refers to the date local public health units were first notified of the case.

Case Characteristics

Table 1a. Summary of recent confirmed cases of COVID-19: Ontario

	Change in cases January 12, 2021	Change in cases January 13, 2021	Percentage change January 13, 2021 compared to January 12, 2021	Cumulative case count as of January 13, 2021
Total number of cases	2,961	3,326	+12.3%	228,310
Number of deaths	74	62	-16.2%	5,189
Number resolved	3,392	3,593	+5.9%	193,814

Note: The number of cases publicly reported by the province each day may not align with case counts reported to public health on a given day; public health unit reported date refers to the date local public health was first notified of the case. Data corrections or updates can result in case records being removed and or updated from past reports.

Data Source: CCM plus

Table 1b. Summary of recent confirmed cases of COVID-19 by age group and gender: Ontario

	Change in cases January 12, 2021	Change in cases January 13, 2021	Cumulative case count as of January 13, 2021
Gender: Male	1,441	1,701	111,525
Gender: Female	1,505	1,695	115,485
Ages: 19 and under	408	419	29,845
Ages: 20-39	1,140	1,240	83,353
Ages: 40-59	785	977	65,741
Ages: 60-79	412	468	32,924
Ages: 80 and over	215	219	16,395

Note: Not all cases have a reported age or gender reported. Data corrections or updates can result in case records being removed and or updated from past reports and may result in subset totals (i.e., age group, gender) differing from past publicly reported case counts.

Data Source: CCM plus

Table 2. Summary of recent confirmed cases of COVID-19 in school aged children by age group, August 30, 2020 to January 13, 2021: Ontario

	Change in cases January 12, 2021	Change in cases January 13, 2021	Cumulative case count from August 30, 2020 to January 13, 2021
Ages: 4 to 8	64	62	4,787
Ages: 9 to 13	90	86	6,715
Ages: 14 to 17	111	114	6,929

Note: Includes all confirmed cases of COVID-19 for specified ages, regardless of school attendance. Data corrections or updates can result in case records being removed and or updated from past reports and may result in subset totals (i.e., age group) differing from past publicly reported case counts.

Data Source: CCM plus

Table 3. Summary of recent confirmed cases of COVID-19 in long-term care homes: Ontario

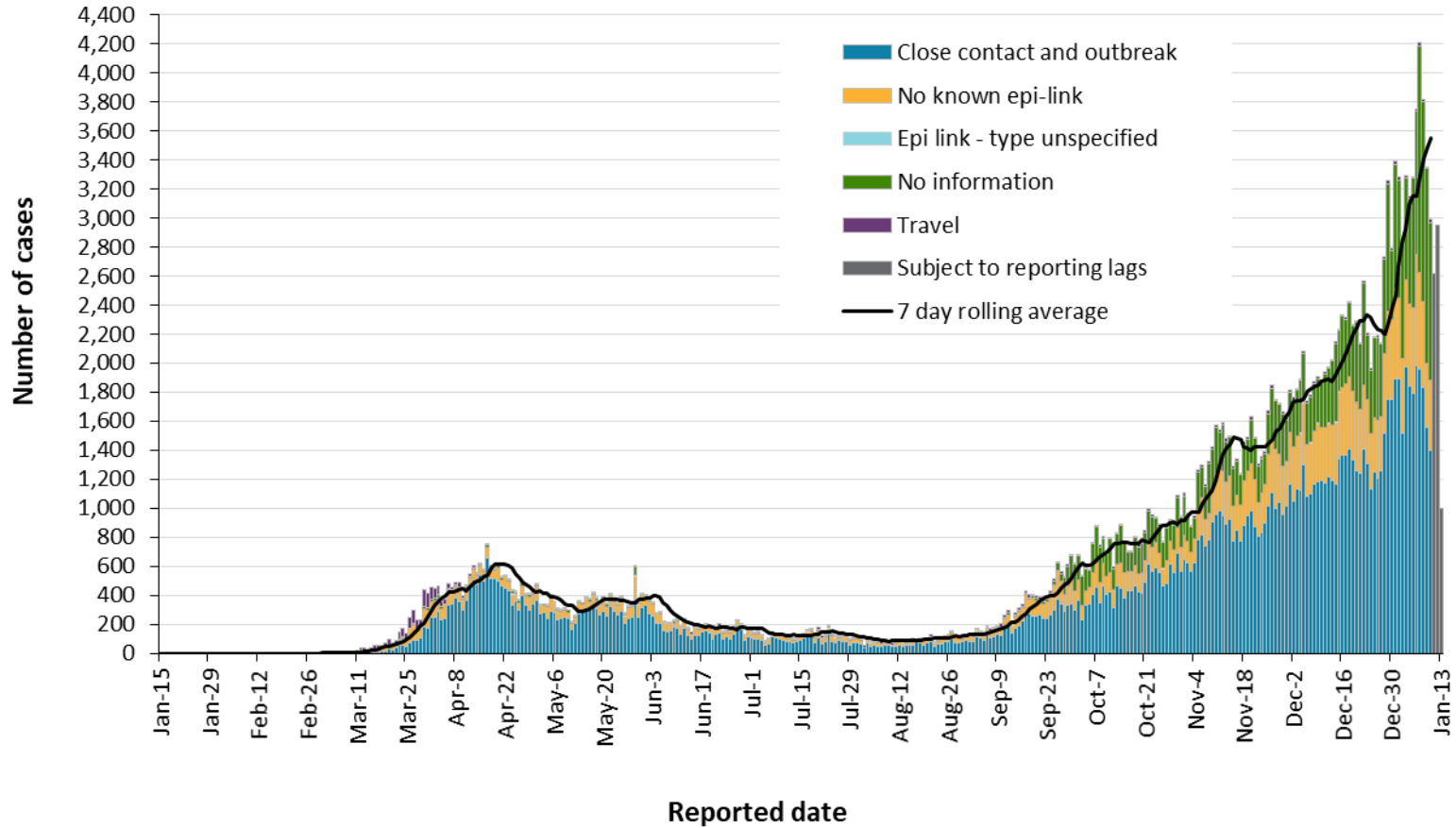
Long-term care home cases	Change in cases January 12, 2021	Change in cases January 13, 2021	Cumulative case count as of January 13, 2021
Residents	151	143	12,869
Health care workers	68	71	5,009
Deaths among residents	36	29	3,092
Deaths among health care workers	1	0	10

Note: Information on how long-term care home residents and health care workers are identified is available in the technical notes. Also, the change in cases in these categories may represent existing case records that have been updated.

Data Source: CCM plus

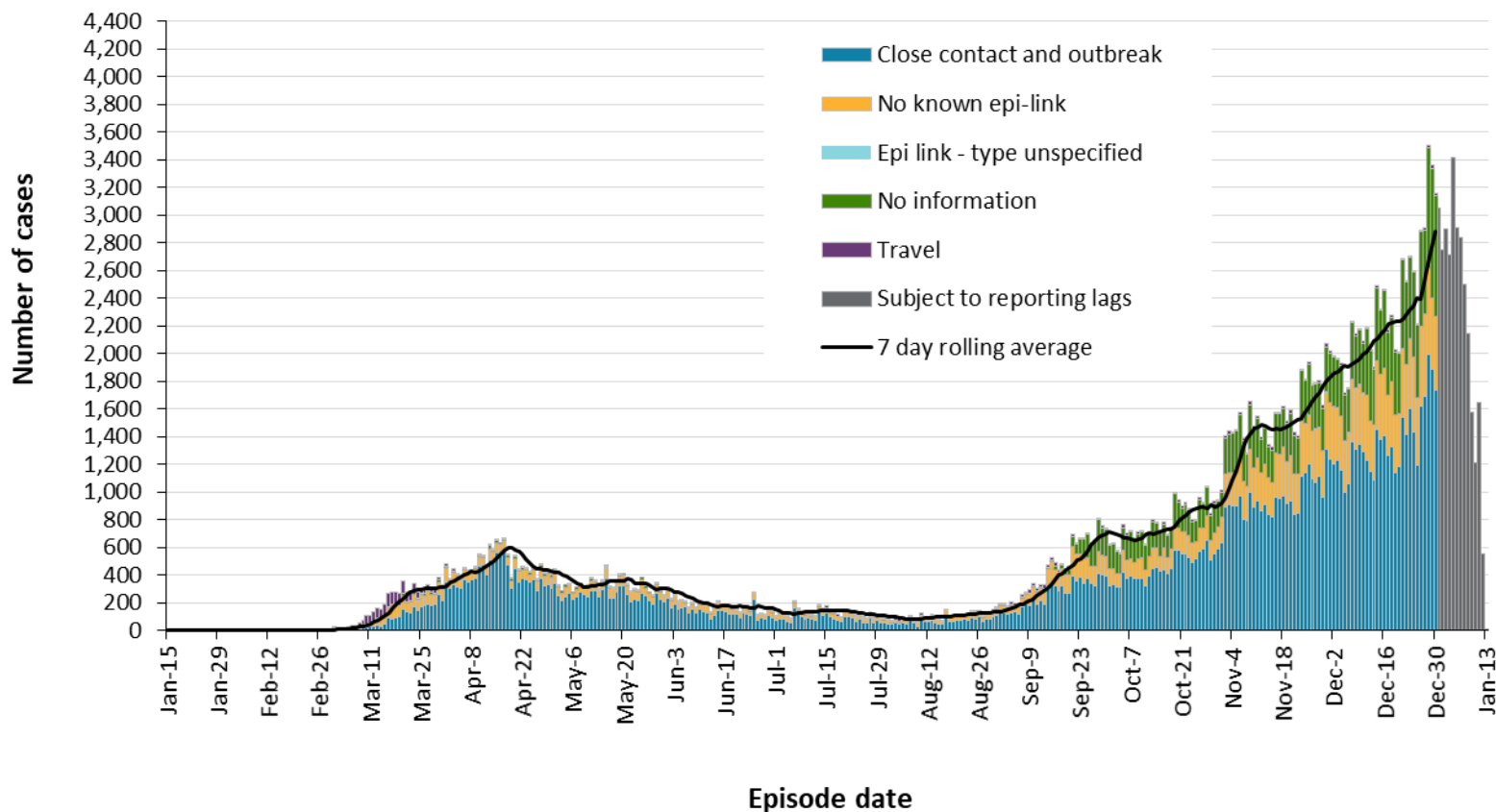
Time

Figure 1. Confirmed cases of COVID-19 by likely acquisition and public health unit reported date: Ontario, January 15, 2020 to January 13, 2021



Data Source: CCM plus

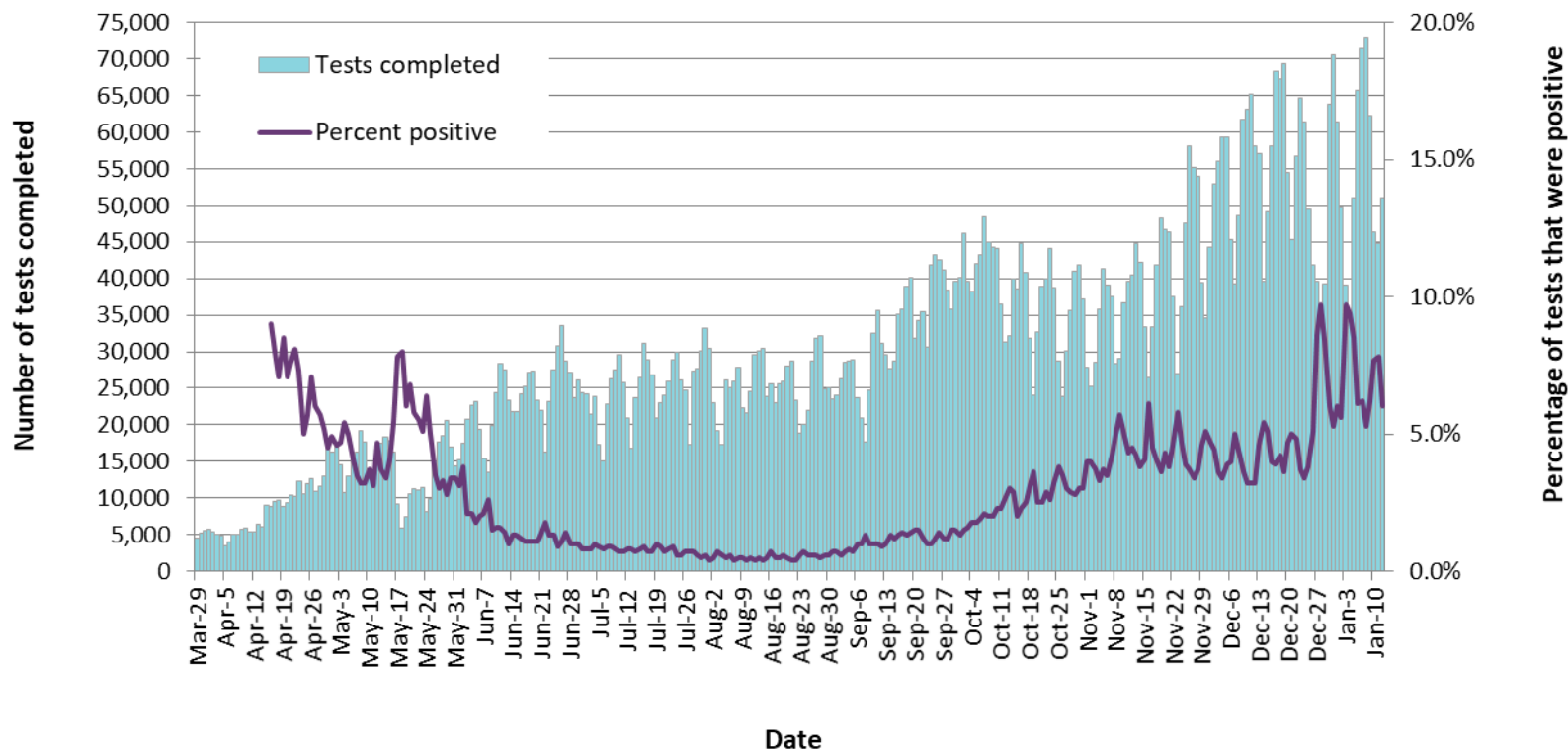
Figure 2. Confirmed cases of COVID-19 by likely acquisition and approximation of symptom onset date: Ontario, January 15, 2020 to January 13, 2021



Note: Not all cases may have an episode date and those without one are not included in the figure. Episode date is defined and available in the technical notes.

Data Source: CCM plus

Figure 3. Number of COVID-19 tests completed and percent positivity: Ontario, March 29, 2020 to January 12, 2021

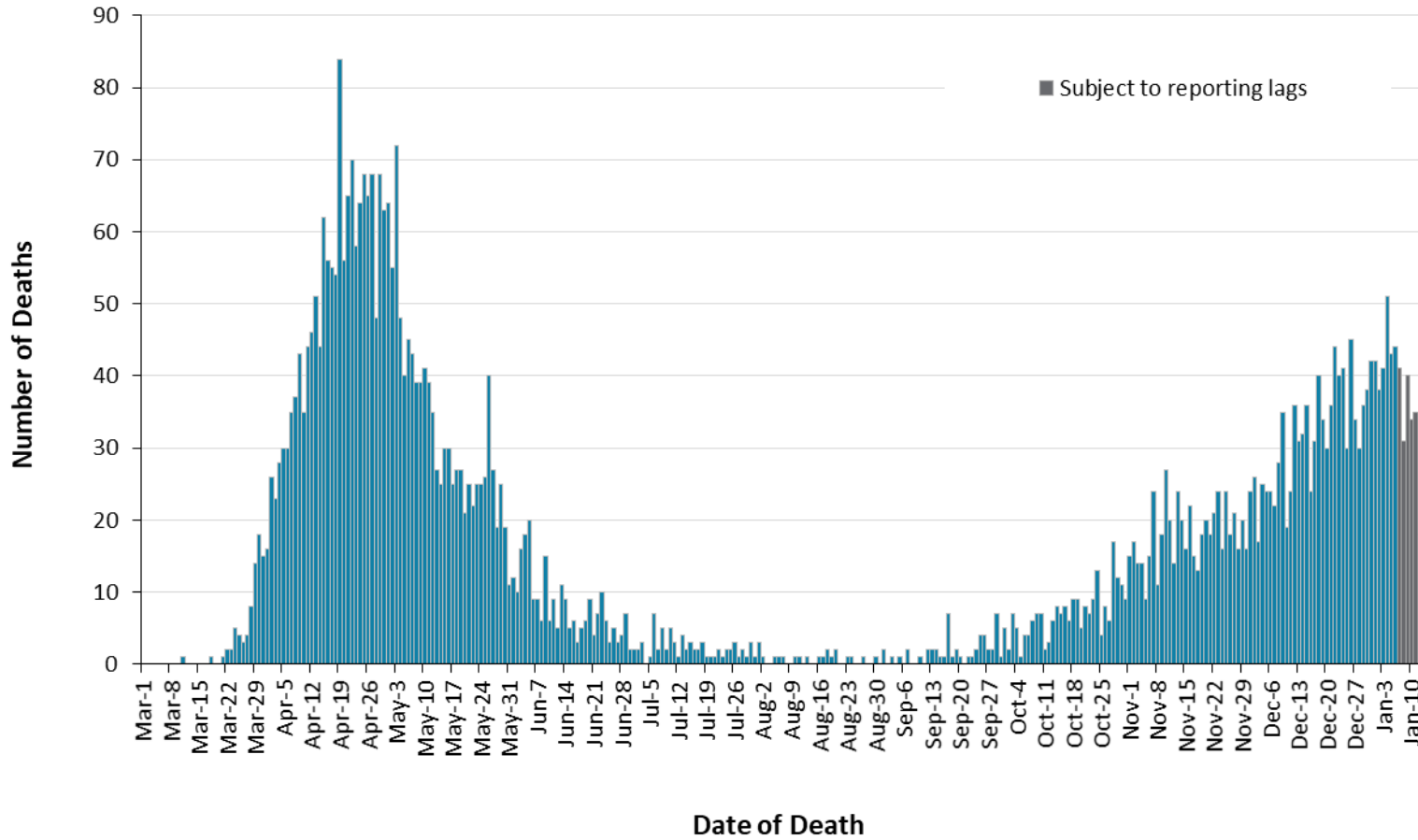


Note: The number of tests performed does not reflect the number of specimens or persons tested. More than one test may be performed per specimen or per person. As such, the percentage of tests that were positive does not necessarily translate to the number of specimens or persons testing positive.

Data Source: The Provincial COVID-19 Diagnostics Network, data reported by member microbiology laboratories.

Severity

Figure 4. Confirmed deaths among COVID-19 cases by date of death: Ontario, March 1, 2020 to January 13, 2021



Note: Cases without a death date are not included in the figure.

Data Source: CCM plus

Table 4. Confirmed cases of COVID-19 by severity: Ontario

	Cumulative case count as of January 13, 2021	Percentage of all cases
Cumulative deaths reported (please note there may be a reporting delay for deaths)	5,189	2.3%
Deaths reported in ages: 19 and under	1	<0.1%
Deaths reported in ages: 20-39	20	<0.1%
Deaths reported in ages: 40-59	202	0.3
Deaths reported in ages: 60-79	1,388	4.2
Deaths reported in ages: 80 and over	3,577	21.8
Ever in ICU	2,183	1.0
Ever hospitalized	11,348	5.0

Note: Not all cases have an age reported. Data corrections or updates can result in case records being removed and/or updated and may result in totals differing from past publicly reported case counts.

Data Source: CCM plus

Geography

Table 5. Summary of recent confirmed cases of COVID-19 by public health unit and region: Ontario

Public Health Unit Name	Change in cases January 12, 2021	Change in cases January 13, 2021	Cumulative case count	Cumulative rate per 100,000 population
Northwestern Health Unit	0	2	226	257.8
Thunder Bay District Health Unit	3	19	690	460.1
TOTAL NORTH WEST	3	21	916	385.5
Algoma Public Health	0	0	128	111.9
North Bay Parry Sound District Health Unit	2	0	177	136.4
Porcupine Health Unit	0	3	167	200.1
Public Health Sudbury & Districts	18	6	381	191.4
Timiskaming Health Unit	2	0	85	260.0
TOTAL NORTH EAST	22	9	938	167.7
Ottawa Public Health	154	144	11,843	1122.9
Eastern Ontario Health Unit	12	39	1,997	956.8
Hastings Prince Edward Public Health	2	3	331	196.4
Kingston, Frontenac and Lennox & Addington Public Health	2	5	622	292.4
Leeds, Grenville & Lanark District Health Unit	5	3	749	432.5
Renfrew County and District Health Unit	0	3	288	265.1

Public Health Unit Name	Change in cases January 12, 2021	Change in cases January 13, 2021	Cumulative case count	Cumulative rate per 100,000 population
TOTAL EASTERN	175	197	15,830	821.7
Durham Region Health Department	119	93	9,285	1303.3
Haliburton, Kawartha, Pine Ridge District Health Unit	2	6	676	357.8
Peel Public Health	536	572	47,193	2938.6
Peterborough Public Health	10	7	452	305.5
Simcoe Muskoka District Health Unit	50	80	4,521	754.0
York Region Public Health	219	357	21,898	1786.4
TOTAL CENTRAL EAST	936	1,115	84,025	1875.3
Toronto Public Health	738	968	71,136	2279.7
TOTAL TORONTO	738	968	71,136	2279.7
Chatham-Kent Public Health	14	17	946	889.8
Grey Bruce Health Unit	5	11	575	338.5
Huron Perth Public Health	11	29	956	684.0
Lambton Public Health	72	20	1,462	1116.3
Middlesex-London Health Unit	103	102	4,666	919.4
Southwestern Public Health	52	18	1,946	920.1
Windsor-Essex County Health Unit	245	268	10,422	2453.2
TOTAL SOUTH WEST	502	465	20,973	1240.4
Brant County Health Unit	22	29	1,306	841.5

Public Health Unit Name	Change in cases January 12, 2021	Change in cases January 13, 2021	Cumulative case count	Cumulative rate per 100,000 population
City of Hamilton Public Health Services	171	107	7,833	1322.8
Haldimand-Norfolk Health Unit	16	8	1,121	982.6
Halton Region Public Health	88	85	7,004	1131.3
Niagara Region Public Health	131	165	6,016	1273.3
Region of Waterloo Public Health and Emergency Services	146	100	7,829	1339.8
Wellington-Dufferin-Guelph Public Health	11	57	3,383	1084.6
TOTAL CENTRAL WEST	585	551	34,492	1210.5
TOTAL ONTARIO	2,961	3,326	228,310	1535.9

Notes: Health units with data corrections or updates could result in records being removed from totals resulting in negative counts.

Data Source: CCM plus

Outbreaks

Table 6. Summary of recent confirmed COVID-19 outbreaks reported in long-term care homes, retirement homes and hospitals by status: Ontario

Institution type	Change in outbreaks January 12, 2021	Change in outbreaks January 13, 2021	Number of ongoing outbreaks	Cumulative number of outbreaks reported
Long-term care homes	8	7	259	1,053
Retirement homes	8	4	163	587
Hospitals	6	4	89	305

Note: Ongoing outbreaks include all outbreaks that are 'Open' in CCM plus without a 'Declared Over Date' recorded, or where the outbreak started more than five months ago, even for outbreaks where the Outbreak Status value selected in CCM/iPHIS is 'OPEN'. The start of the outbreak is determined by the onset date of first case, or if missing the outbreak reported date, or else if that is also missing, then the outbreak created date.

Data Source: CCM plus

Technical Notes

Data Sources

- The data for this report were based on:
 - Information extracted from the Ontario Ministry of Health (Ministry) integrated Public Health Information System (iPHIS) database for Toronto Public Health as of **January 13, 2021 at 1 p.m.**
 - Information successfully uploaded to the Ministry from Local Systems: Toronto Public Health (Coronavirus Rapid Entry System) CORES as of **January 13, 2021 at 2 p.m.**
 - Information successfully extracted from the Public Health Case and Contact Management Solution (CCM) for all other PHUs by PHO as of **January 13, 2021 at 1 p.m.**
- CCM and CCM plus (which includes CCM, iPHIS, and CORES) are dynamic disease reporting systems, which allow ongoing updates to data previously entered. As a result, data extracted from CCM and the Local Systems represent a snapshot at the time of extraction and may differ from previous or subsequent reports.
- Ontario population projection data for 2020 were sourced from Ministry, IntelliHEALTH Ontario. Data were extracted on November 26, 2019.
- COVID-19 test data were based on information from The Provincial COVID-19 Diagnostics Network, reported by member microbiology laboratories.

Data Caveats

- The data only represent cases reported to public health units and recorded in CCM plus. As a result, all counts will be subject to varying degrees of underreporting due to a variety of factors, such as disease awareness and medical care seeking behaviours, which may depend on severity of illness, clinical practice, changes in laboratory testing, and reporting behaviours.
- Lags in CCM plus data entry due to weekend staffing may result in lower case counts than would otherwise be recorded.
- Only cases meeting the confirmed case classification as listed in the MOH [COVID-19 case definition](#) are included in the report counts from CCM plus. This includes persons with a positive detection of serum/plasma immunoglobulin G (IgG) antibodies to SARS-CoV-2, which was added to the confirmed case definition on August 6, 2020.
- Cases of confirmed reinfection, i.e. where genome sequencing indicates the two episodes are caused by different viral lineages, added to the confirmed case definition on November 20, 2020, are counted as unique investigations.
- The number of tests performed does not reflect the number of specimens or persons tested. More than one test may be performed per specimen or per person. As such, the percentage of

tests that were positive does not necessarily translate to the number of specimens or persons testing positive.

- Reported date is the date the case was reported to the public health unit.
- Case episode date is based on an estimate of the best date of disease onset. This date is calculated based on either the date of symptom onset, specimen collection/test date, or the date reported to the public health unit.
- Resolved cases are determined only for COVID-19 cases that have not died. Cases that have died are considered fatal and not resolved. The following cases are classified as resolved:
 - Cases that are reported as 'recovered' in CCM
 - Cases that are not hospitalized and are 14 days past their episode date
 - Cases that are currently hospitalized (no hospital end date entered) and have a status of 'closed' in CCM (indicating public health unit follow-up is complete) and are 14 days past their symptom onset date or specimen collection date
- Hospitalization includes all cases for which a hospital admission date was reported at the time of data extraction. It includes cases that have been discharged from hospital as well as cases that are currently hospitalized. Emergency room visits are not included in the number of reported hospitalizations.
- ICU admission includes all cases for which an ICU admission date was reported at the time of data extraction. It is a subset of the count of hospitalized cases. It includes cases that have been treated or that are currently being treated in an ICU.
- Orientation of case counts by geography is based on the diagnosing health unit (DHU). DHU refers to the case's public health unit of residence at the time of illness onset and not necessarily the location of exposure. Cases for which the DHU was reported as MOH (to signify a case that is not a resident of Ontario) have been excluded from the analyses.
- Likely source of acquisition is determined by examining the epidemiologic link and epidemiologic link status fields in CCM and local systems. If no epidemiologic link is identified in those fields the risk factor fields are examined to determine whether a case travelled, was associated with a confirmed outbreak, was a contact of a case, had no known epidemiological link (sporadic community transmission) or was reported to have an unknown source/no information was reported. Some cases may have no information reported if the case is untraceable, was lost to follow-up or referred to FNIHB. Cases with multiple risk factors were assigned to a single likely acquisition source group which was determined hierarchically in the following order:
 - For cases with an episode date *on or after* April 1, 2020: Outbreak-associated > close contact of a confirmed case > travel > no known epidemiological link > information missing or unknown

- For cases with an episode date *before* April 1, 2020: Travel > outbreak-associated > close contact of a confirmed case > no known epidemiological link > information missing or unknown
- Deaths are determined by using the outcome field in CCM plus. Any case marked 'Fatal' is included in the deaths data. The CCM field Type of Death is not used to further categorize the data.
 - The date of death is determined using the outcome date field for cases marked as 'Fatal' in the outcome field.
- COVID-19 cases from CCM plus for which the Classification and/or Disposition was reported as ENTERED IN ERROR, DOES NOT MEET DEFINITION, IGNORE, DUPLICATE, or any variation on these values have been excluded. The provincial case count for COVID-19 includes cases that are counted once across all systems from which the case data are obtained. Duplicate records may exist if these records were not identified and resolved prior to data upload to the Ministry.
- Ongoing outbreaks include all outbreaks that are 'Open' in CCM plus without a 'Declared Over Date' recorded, or where the outbreak started more than five months ago, even for outbreaks where the Outbreak Status value selected in CCM/iPHIS is 'OPEN'. The start of the outbreak is determined by the onset date of first case, or if missing the outbreak reported date, or else if that is also missing, then the outbreak created date.
- 'Long-term care home residents' includes cases that reported 'Yes' to the risk factor 'Resident of a long-term care home'; or 'Yes' to the risk factor 'Resident of nursing home or other chronic care facility' and reported to be part of an outbreak assigned as a long-term care home (via the Outbreak number or case comments field); or were reported to be part of an outbreak assigned as a long-term care home (via the outbreak number or case comments field) with an age over 70 years and did not report 'No' to the risk factors 'Resident of long-term care home' or 'Resident of nursing home or other chronic care facility'. 'Long-term care home residents' excludes cases that reported 'Yes' to any of the health care worker occupational risk factors.
- The 'health care workers' variable includes cases that reported 'Yes' to any of the occupation of health care worker, doctor, nurse, dentist, dental hygienist, midwife, other medical technicians, personal support worker, respiratory therapist, first responder.
- 'Health care workers associated with long-term care outbreaks' includes 'health care workers' reported to be part of an outbreak assigned as a long-term care home (via the outbreak number or case comments field). Excludes cases that reported 'Yes' to risk factors 'Resident of long-term care home' or 'Resident of nursing home or other chronic care facility' and 'Yes' to the calculated 'health care workers' variable.
- Percent change is calculated by taking the difference between the current period (i.e., daily count or sum of the daily count over a 7-day period) and previous period (i.e., daily count or sum of the daily count over a 7-day period), divided by the previous period.

Appendix A

Table A1. Weekly rates of confirmed COVID-19 cases per 100,000 population over recent rolling 7-day periods, by reported date and public health unit: Ontario, December 29, 2020 to January 10, 2021

Public Health Unit Name	Dec 29 to Jan 4	Dec 30 to Jan 5	Dec 31 to Jan 6	Jan 1 to Jan 7	Jan 2 to Jan 8	Jan 3 to Jan 9	Jan 4 to Jan 10	% change from Dec 29-Jan 4 to Jan 4-Jan 10
NORTH WEST								
Northwestern Health Unit	19.4	35.4	39.9	35.4	45.6	50.2	50.2	+158.8%
Thunder Bay District Health Unit	22.0	20.7	28.0	27.3	40.7	40.7	44.0	+100.0%
NORTH EAST								
Algoma Public Health	23.6	27.1	35.0	34.1	38.5	39.3	39.3	+66.5%
North Bay Parry Sound District Health Unit	21.6	27.7	24.7	24.7	20.8	23.1	24.7	+14.4%
Porcupine Health Unit	6.0	8.4	7.2	27.6	28.8	34.8	37.2	+520.0%
Public Health Sudbury & Districts	13.1	18.1	20.6	22.6	32.7	34.7	35.7	+172.5%
Timiskaming Health Unit	42.8	36.7	36.7	27.5	12.2	12.2	12.2	-71.5%
EASTERN								
Ottawa Public Health	75.1	74.4	79.0	82.7	91.9	93.2	95.2	+26.8%
Eastern Ontario Health Unit	146.1	149.5	147.1	151.9	155.7	162.4	156.2	+6.9%
Hastings Prince Edward Public Health	21.4	21.4	20.2	15.4	16.6	17.8	14.2	-33.6%
Kingston, Frontenac and Lennox & Addington Public Health	24.4	26.8	26.3	23.5	24.9	26.3	24.9	+2.0%

Public Health Unit Name	Dec 29 to Jan 4	Dec 30 to Jan 5	Dec 31 to Jan 6	Jan 1 to Jan 7	Jan 2 to Jan 8	Jan 3 to Jan 9	Jan 4 to Jan 10	% change from Dec 29-Jan 4 to Jan 4-Jan 10
Leeds, Grenville & Lanark District Health Unit	26.6	28.3	29.5	27.1	20.2	21.4	23.1	-13.2%
Renfrew County and District Health Unit	20.3	20.3	27.6	36.8	33.1	25.8	29.5	+45.3%
CENTRAL EAST								
Durham Region Health Department	143.9	143.0	150.5	154.0	163.7	160.2	154.4	+7.3%
Haliburton, Kawartha, Pine Ridge District Health Unit	42.9	45.5	49.8	49.2	45.5	46.6	43.4	+1.2%
Peel Public Health	233.7	240.7	249.2	250.7	252.7	263.6	260.3	+11.4%
Peterborough Public Health	48.7	54.1	43.9	45.3	35.8	35.8	32.4	-33.5%
Simcoe Muskoka District Health Unit	68.7	75.1	75.9	75.4	79.1	82.2	83.6	+21.7%
York Region Public Health	203.9	202.0	202.1	201.6	200.0	199.1	192.4	-5.6%
TORONTO								
Toronto Public Health	176.7	173.0	189.0	216.1	226.2	226.7	223.4	+26.4%
SOUTH WEST								
Chatham-Kent Public Health	145.8	131.7	140.1	121.3	111.9	115.7	108.2	-25.8%
Grey Bruce Health Unit	30.0	33.6	39.4	43.6	40.6	40.0	38.3	+27.7%
Huron Perth Public Health	90.9	83.0	95.9	105.9	96.6	87.3	89.4	-1.7%
Lambton Public Health	281.0	268.0	283.3	250.5	239.0	226.0	263.4	-6.3%
Middlesex-London Health Unit	144.8	138.1	141.3	146.2	153.9	162.9	163.3	+12.8%

Public Health Unit Name	Dec 29 to Jan 4	Dec 30 to Jan 5	Dec 31 to Jan 6	Jan 1 to Jan 7	Jan 2 to Jan 8	Jan 3 to Jan 9	Jan 4 to Jan 10	% change from Dec 29-Jan 4 to Jan 4-Jan 10
Southwestern Public Health	169.3	150.8	135.7	121.0	123.9	148.9	148.5	-12.3%
Windsor-Essex County Health Unit	347.9	338.3	329.3	300.8	292.4	286.2	272.8	-21.6%
CENTRAL WEST								
Brant County Health Unit	96.0	103.7	116.6	110.8	112.1	116.6	101.8	+6.0%
City of Hamilton Public Health Services	159.9	158.4	157.6	156.7	154.9	155.4	150.1	-6.1%
Haldimand-Norfolk Health Unit	124.5	118.3	88.5	99.9	97.3	102.6	97.3	-21.8%
Halton Region Public Health	114.7	120.2	126.3	119.2	115.5	120.7	108.9	-5.1%
Niagara Region Public Health	178.0	185.6	195.6	210.0	213.3	230.9	251.6	+41.3%
Region of Waterloo Public Health and Emergency Services	141.9	144.8	164.6	168.6	173.4	185.0	189.4	+33.5%
Wellington-Dufferin-Guelph Public Health	125.4	136.3	139.5	138.5	143.6	147.5	145.2	+15.8%
TOTAL ONTARIO	148.3	148.5	154.9	160.4	163.9	167.1	165.1	+11.3%

Note: Rates are based on the sum of the daily case counts during the date ranges specified in each column.

Data Source: CCM plus

Disclaimer

This document was developed by Public Health Ontario (PHO). PHO provides scientific and technical advice to Ontario's government, public health organizations and health care providers. PHO's work is guided by the current best available evidence at the time of publication.

The application and use of this document is the responsibility of the user. PHO assumes no liability resulting from any such application or use.

This document may be reproduced without permission for non-commercial purposes only and provided that appropriate credit is given to PHO. No changes and/or modifications may be made to this document without express written permission from PHO.

Citation

Ontario Agency for Health Protection and Promotion (Public Health Ontario). Epidemiologic summary: COVID-19 in Ontario – January 15, 2020 to January 13, 2021. Toronto, ON: Queen's Printer for Ontario; 2021.

For Further Information

For more information, email cd@oahpp.ca.

Public Health Ontario

Public Health Ontario is an agency of the Government of Ontario dedicated to protecting and promoting the health of all Ontarians and reducing inequities in health. Public Health Ontario links public health practitioners, front-line health workers and researchers to the best scientific intelligence and knowledge from around the world.

For more information about PHO, visit publichealthontario.ca.

